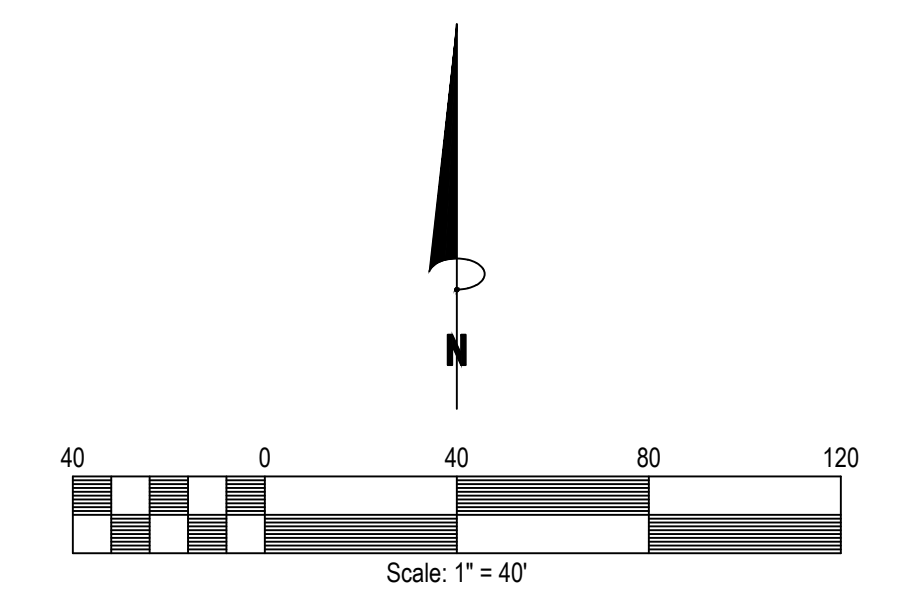
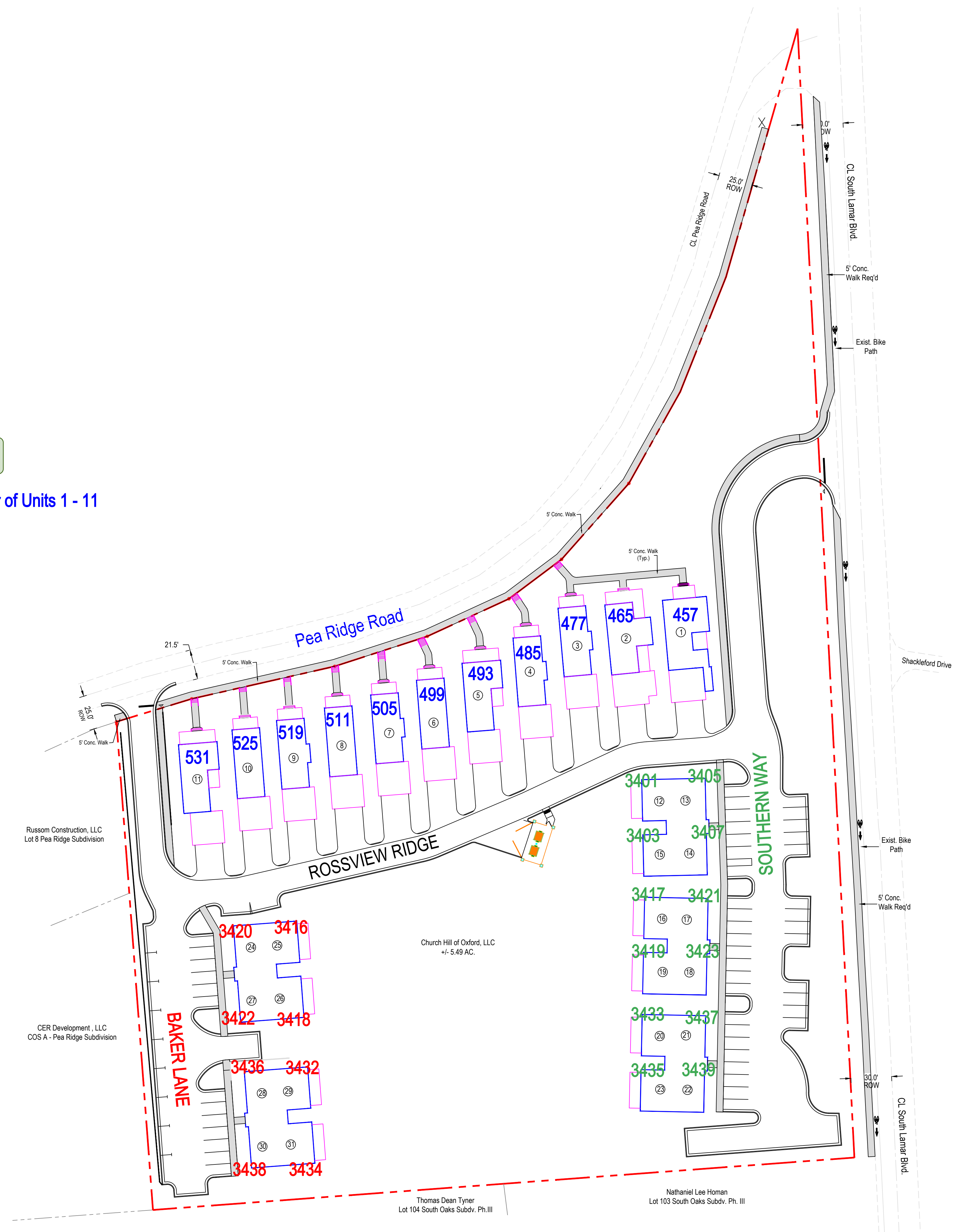


APPROVED
By LESLEY RAKESTRAW at 2:38 pm, Oct 18, 2024

REVISED
4:01 pm, Oct 21, 2024 Flipped Order of Units 1 - 11



LEGEND

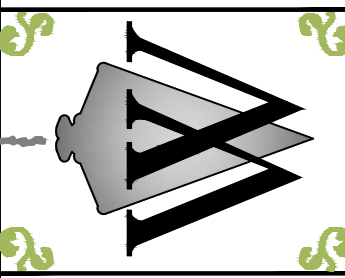
	RIGHT-OF-WAY LINES		CONCRETE CURB AND GUTTER
	PROPERTY LINES		PROPERTY CORNERS
	CENTERLINE ROAD		MONUMENTS FOUND
	APPARENT ADJOINING PROPERTY LINE		REFERENCE CORNERS
	UTILITY EASEMENT LINES		BENCHMARKS
	UNDERGROUND ELECTRIC LINES		CURB INLET
	SEWER LINES		FIRE HYDRANT
	GAS LINES		ELECTRIC BOX
	WATER LINES		EXISTING SANITARY MANHOLES
	CHAIN LINK FENCE LINES		STUBOUT
	HEDGE ROW		HIGH DENSITY POLYETHYLENE
	ASPHALT AREAS		INLET
	POINT OF BEGINNING		WATER METERS
	NOT TO SCALE		WATER VALVE
	PLAT CALLS		SPOT ELEVATION
	MEASURED CALLS		

(All symbols in legend may not be used on current survey.)

LEGEND

	PEDESTRIAN PATHWAY
--	--------------------

WILLIAMS ENGINEERING CONSULTANTS, INC.
Professional Engineers | Professional Land Surveyors
720 NORTH LAMAR BOULEVARD, SUITE A
P.O. BOX 1197 OXFORD, MISSISSIPPI 38655
662.236.9675



Construction Plans for:
THE SOUTHERN, A CONDOMINIUM
South Lamar Boulevard
City of Oxford, MS

REVISION	DATE
City Comments	4-5-2024
City Comments	6-10-2024

Scale: 1" = 60'
Date: July 27, 2023
File: Church Hill - Mathew Baker Design
File: Kutzou Cove 7-21-23 design.dwg
Proj No.: SD-233729
Drawn By: BM
Checked By: JWW

Sheet Title:
Connectivity Plan

Sheet No.:
C 2.2